

Tonasket School District

2021-22

COVID Health Protocols



Table of Contents



Bus Transportation	3
Becoming Sick at School	4
Decision Tree: Symptomatic at School	5
Decision Tree: Identify and Care for Close Contacts at School	6
Contact Tracing Checklist	7
COVID Testing	8
K-12 Close Contact Exception Criteria	9
Hygiene Practices	10
Face Coverings	11
Physical Distancing	12
Cleaning and Disinfecting	13
Transportation for Athletics	14
Helpful Links	15-17

All drivers and other school staff on the bus must wear appropriate face covering when not working alone. Students must wear a face mask before boarding the bus, while riding on the bus, and while departing the bus.

Note: Students will not be allowed to eat on the bus at any time.

According to the OSPI Reopening Schools Planning Guide, the following principles for COVID prevention within school transportation are to be followed:

- Maximize outside air and keep windows open as much as possible.



WHAT TO DO WHEN A STUDENT OR STAFF BECOME SICK AT SCHOOL

Office staff will be following the information below for sending kids home:

Send student/staff home if they show 1 of the following

- Fever (100.4°F) or chills
- Cough
- Shortness of breath
- Recent loss of taste or smell

Send student/staff home if they show 2 or more of the following

- Fatigue, unusual
- Muscle or body aches
- Headache
- Sore throat
- Congestion
- Runny nose
- Nausea or vomiting
- Diarrhea (3 or more watery stools in 24 hours)

Anyone who has been exposed to a Positive COVID infectious person must quarantine/test per DOH guidelines. The only way to keep schools/sports open is to...

STAY HOME WHEN YOU ARE SICK AND FOLLOW THE GUIDELINES

Instruct family/staff to contact their healthcare provider or Okanogan County Public Health to inquire about being tested

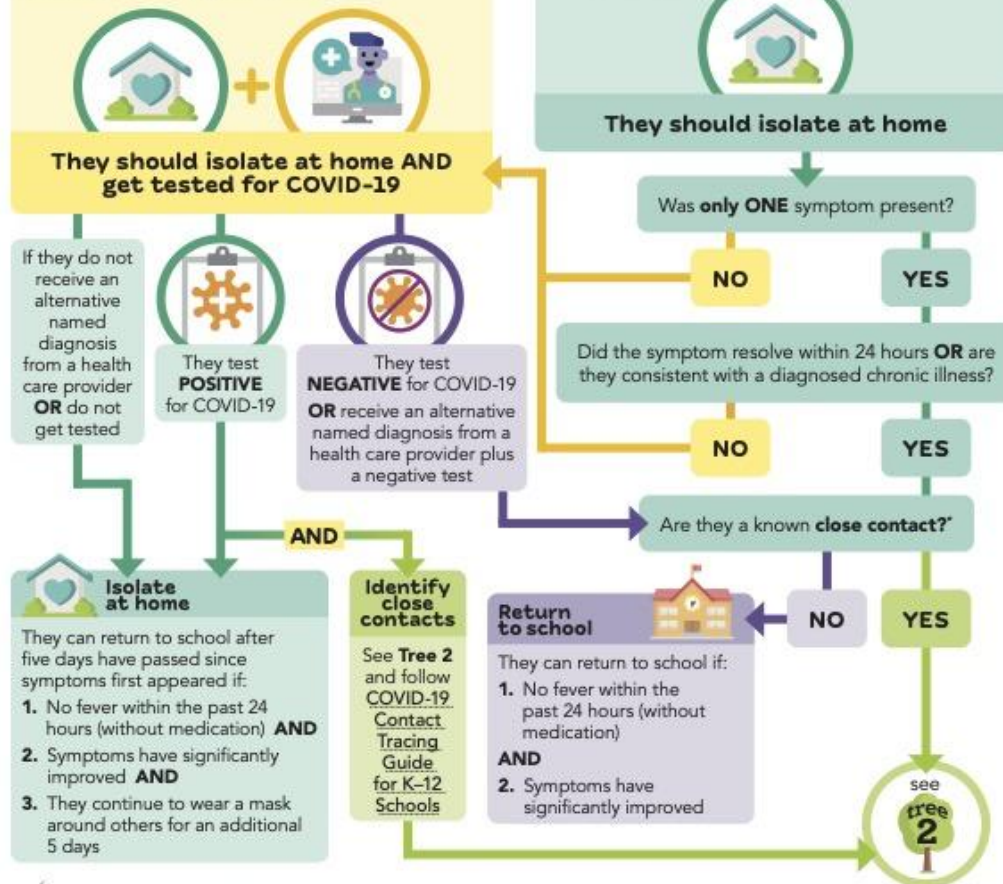
What to do if a Person is Symptomatic at School



If a person has one or more of these symptoms:

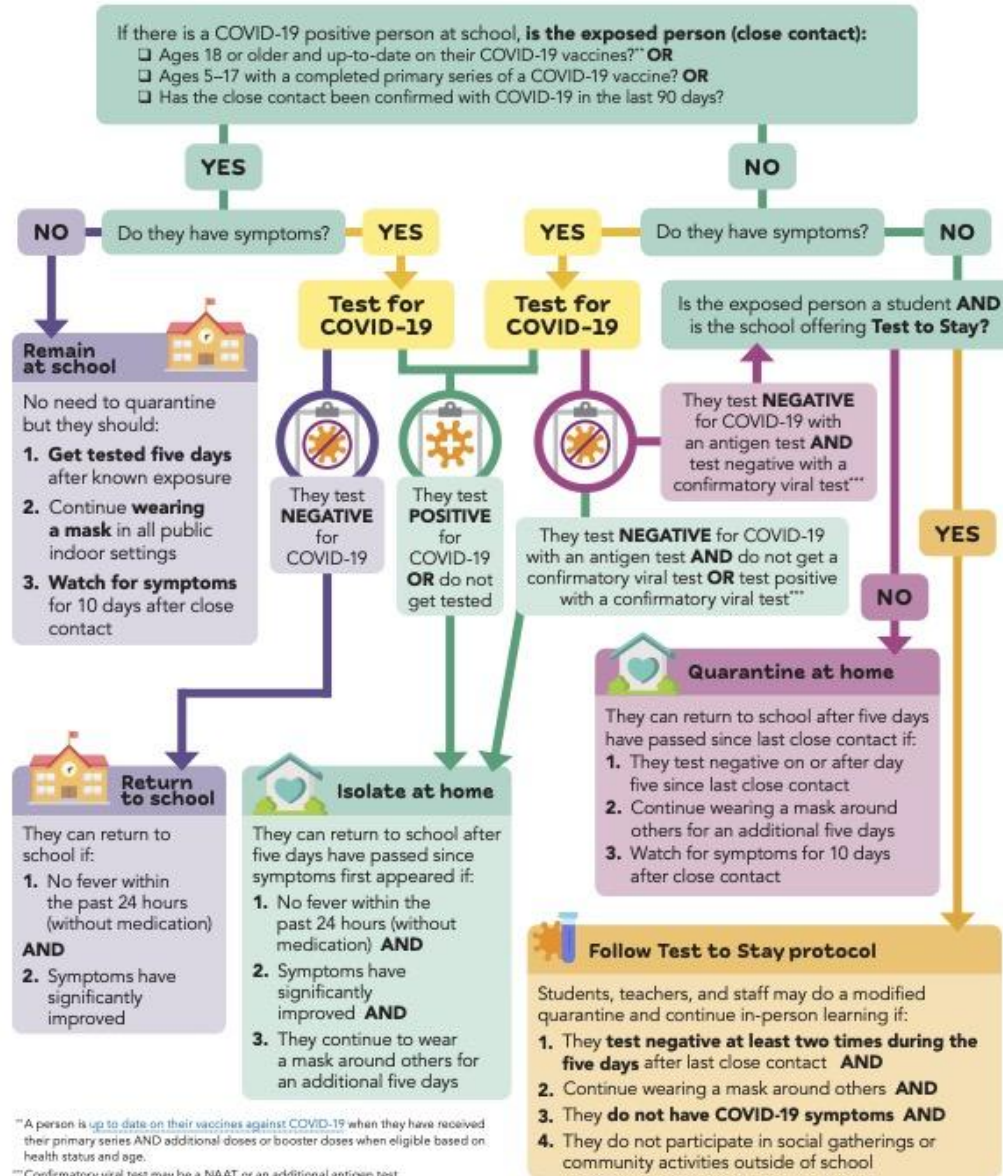
- Fever ($\geq 100.4^{\circ}\text{F}$) or chills
- Shortness of breath or difficulty breathing
- Muscle or body aches
- New loss of taste or smell
- Cough (new, changed, or worsening)

- Congestion or runny nose
- Nausea, vomiting, or diarrhea
- Headache
- Fatigue
- Sore throat



Close contact: Someone who was within 6 feet of a COVID-19 positive person for a total of 15 minutes or more within 24 hours during the case's contagious period. In a K-12 indoor/outdoor classroom, the close contact definition excludes students who were at least three feet away from an infectious student when both students were consistently and correctly wearing masks. Please see the [COVID-19 Contact Tracing Guide for K-12 Schools](#) for additional information. The definition of a close contact may vary in some situations. The local health department makes the ultimate determination of a close contact during its investigation, but may delegate this decision if appropriate.

Identify and Care for Close Contacts at School



^{**} A person is up to date on their vaccines against COVID-19 when they have received their primary series AND additional doses or booster doses when eligible based on health status and age.
^{***} Confirmatory viral test may be a NAAT or an additional antigen test

COVID-19 Contact Tracing Checklist for K–12 Schools



Use this checklist, along with the [K–12 Isolation and Quarantine Decision Trees](#) in this document and the supplemental document [COVID-19 Contact Tracing Guide for K–12 Schools](#) to conduct contact tracing for schools. For more detailed information about contact tracing, reporting cases, isolation, and quarantine, please see the [K–12 Supplemental Considerations](#) and [K–12 Requirements](#) documents.

- Contact the COVID-19 case** or their parent/guardian if the case is a minor.
 - Provide instructions for how long the case needs to isolate at home from school & other activities. See the [COVID-19 Contact Tracing Guide for K–12 Schools](#) for information on how long isolation should last.
- Notify your LHJ about any cases.** If needed, use the [School Case and Close Contact Reporting Line List Template](#).
- Determine contagious period for the case.**
 - Confirm the dates the case attended school during contagious period and go over their schedule, including classes and other school-associated activities. See the [COVID-19 Contact Tracing Guide for K–12 Schools](#) for information on identifying the contagious period.
- Identify all close contacts** in school and school-associated activities during the case's contagious period. Some of this information may come from the case but can be supplemented using attendance records and seating charts. Use the setting prioritization guide in the [K–12 Supplemental Consideration](#) document and consider the following:
 - High Priority Settings (Focus contact tracing efforts here)**
 - Bus rides/routes
 - Indoor classrooms where students do not consistently distance or wear masks (e.g., younger children, those with a mask exemption, etc.)
 - Health room
 - Indoor breakrooms and workrooms (staff only)
 - Indoor and outdoor school-affiliated activities, especially those that are aerosol-generating (sports, performing arts, cheer, speech/debate, etc.) that take place before, during, or after school
 - Low Priority Settings**
 - Indoor classrooms where ALL students, teachers, and staff were wearing masks*
 - Outdoor classrooms
 - Indoor meal locations
 - Hallways/stairwells and other locations used during transitions periods
 - Restrooms
 - Any outdoor activities or locations (classrooms, meals, PE, etc.) *except for aerosol-generating activities (sports, performing arts, cheer, speech/debate, etc.)*
- Use the decision trees** to determine the appropriate quarantine option for all close contacts. See the [COVID-19 Contact Tracing Guide for K–12 Schools](#) for additional information on quarantine.
- Notify all close contacts** and parents/guardians of all close contacts. Consider using the phone call or letter notification templates in the [K–12 Schools Contact Tracing and Case Investigation Toolkit](#). Notifications should include:
 - Whether and how long a close contact needs to quarantine at home, or if they are eligible for a modified quarantine through Test to Stay.
 - When close contacts should be tested for COVID-19, what type of test they should receive, and information about accessing testing.
 - What COVID-19-like symptoms to look for, and how long to watch for symptoms.
- Notify all students, parents/guardians, and staff who were in the same classroom or school** as the case(s), if agreed upon with your LHJ. Consider using the phone call or letter notification templates in the [K–12 Schools Contact Tracing and Case Investigation Toolkit](#).

*If students are seated at least 3 feet apart and consistently wearing masks in a school setting, they are not considered close contacts.

We are implementing an on-site COVID testing program for symptomatic staff and students. This is a no-cost to the district program that will allow anyone who desires a rapid COVID test to get one at school. This will allow us to reduce quarantine time for staff and students while helping to reduce the chance of COVID transmission.

COVID GUIDELINES

Staff members, please keep the guidelines posted in your rooms, take pictures on your phones, etc so you have access to the information when/if you are sick or exposed. This is what will be used to determine testing, quarantine, etc. We are still having to track illness, exposure, cases, etc. PLEASE STAY HOME IF YOU ARE SICK

TESTING

A testing program will be launched in September. Rapid tests are available and can be used in some cases until we are up and running. When the testing program is up and going these are **OPTIONAL** tests that will be offered during certain days/times.

- These will not be done on a drop-in basis and each scenario will be different. If you are feeling ill please don't wander around looking for the school nurse or wait until you see the nurse, you need to go home/isolate if you are sick.
- If testing is needed because of exposure, etc that will be set up in an appointment type situation.
- PCR tests and rapid tests will be available on a case by case scenario. All testing will not be completed without written consent. Staff members who become symptomatic during the day and feel they may need a test will need to notify the office and isolate in your car until testing options are worked out. The nurse or designated person will be notified to work out the next steps. Tests will be done in a drive-up type situation.
- More information will be sent as things are set in place. If you are symptomatic/exposed after hours local options are listed below for testing. Please remember you can call your doctor or local public health 422-7140.

This will all be a work in progress and we are going to try and offer this as a convenience for staff and students in some cases.

OFF-SCHOOL SITE TESTING LOCATIONS

- **North Valley Hospital**

Can do same day test, set up with admitting. Tests do take 6-8 hours so the same day could end up being the next day if you go in late. Can test for exposure or needed for travel, etc.

- **Family Health Center**

Anyone who needs a COVID test due to exposure (recommend testing 5-7 days after exposure and to quarantine until they are tested and have results) or symptoms (can be tested immediately) need to call 422-5700 and schedule either a telehealth visit or they can schedule a car visit if they're symptomatic so the provider can listen to lungs, take bp, etc. They will then be instructed to come to the FHC curbside area for the COVID swab. Or whatever FHC clinic they live closest to.

If someone needs a test for travel or employment (no symptoms and no exposure) AND if they are an established FHC patient, they can schedule a nurse COVID swab. If they have not ever been seen by anyone at FHC, they will need to schedule a telephone or telehealth visit with a provider so they can place an order for the COVID swab. Most insurance companies are no longer paying for COVID swabs for their members who need one for travel or if their employer requires a test (without any exposure or symptoms)

- **Confluence Tonasket** - no testing

- **Confluence Omak** - Call 663-8711, press 1, follow instructions

- **Life Line** - free drive through COVID testing in Omak running daily M-F 7am-2pm, results in 48-72 hours, No appointment necessary: 912 Koala Ave, Omak

K-12 Close Contact Exception Criteria:

In a K-12 indoor classroom, the close contact definition excludes students who were at least three feet away from an infected student when both students were consistently and correctly wearing face coverings/masks. The following people are K-12 close contacts **if** they were within the specified distance from COVID-19 case for a **cumulative total of at least 15 minutes** over a 24-hour period:

- A student 0 - 3 feet from a student COVID-19 case in an indoor classroom, regardless of mask usage.
- A student 3 - 6 feet from a student COVID-19 case in an indoor classroom if either the case or potential contact was not wearing a mask consistently and correctly.
- A student 0 - 6 feet from a staff COVID-19 case in an indoor classroom, regardless of mask usage.
- A staff member 0 - 6 feet from a COVID-19 case in an indoor classroom, regardless of mask usage.
- A person (including students and staff) 0 - 6 feet from a COVID-19 case in any setting other than an indoor classroom (e.g., cafeteria, outside, sports, performance), regardless of mask usage.

The definition of a close contact may vary in some situations (e.g., less time spent in close proximity to an unmasked person who is coughing, direct cough/sneeze spray, or other contact that is more intense like sharing drinks, eating utensils, etc.). The ultimate determination of close contact is made by the LHJ during its investigation; it may delegate this determination if appropriate.

Tonasket Elementary School**Tonasket Middle School****Tonasket High School****Choice High School/Outreach School****Staff*****Hand Washing & Sanitizing:***

Students will wash their hands in classrooms or use hand sanitizing at the following times:

- On entering classroom
- After using restroom
- After each recess
- After sneezing or blowing nose
- Before and after meals

Hand sanitizer will be supplied to each classroom. Nursing staff will provide all classrooms with lessons on proper hand washing practices. Time will be built into student schedules to ensure that these practices are thoroughly followed.

Help young children to make sure they wash their hands correctly. The best option is to wash hands with soap and water for at least 20 seconds. If soap and water are not readily available, people should use an alcohol-based hand gel with at least 60 percent alcohol. Supervise the use of alcohol-based hand gel by young children.

Do not to touch eyes, nose, and mouth with unwashed hands. Cover coughs or sneezes with a tissue, throw the tissue in the trash, and clean hands with soap and water or hand gel.

Posters displaying healthy hygienic practices will be displayed in classrooms, hallways, cafeteria, gymnasium, locker rooms, classrooms, the library, and office areas.

Shared Hands-On Teaching Materials

- Clean and disinfect hands-on materials often and after each use. Limit shared teaching materials to those you can easily clean and disinfect. Discourage sharing of items that are difficult to clean or disinfect. Children's books and other paper-based materials are not high risk for spreading the virus.
- Ensure adequate supplies to minimize the sharing of high touch materials as much as possible. An example includes assigning each student their own art supplies or limiting the use for one group of children at a time.
- Clean and disinfect shared items between use. Keep each student's belongings separate and in individually labeled containers, cubbies, or areas.

Tonasket Elementary School

Tonasket Middle School

Tonasket High School

Choice High School/Outreach School

Staff

- All students and staff /drivers are required to wear a mask on school buses regardless of vaccination status.
- As required by the Department of Health and L&I, students, staff, and visitors will wear face coverings when indoors at K-12 facilities.
- Staff who are verified to be fully vaccinated may be indoors without masks when students are not present or expected to be present.
- When possible, students should use a mask supplied by home. Parents are encouraged to launder masks often and make sure students wear a clean mask each day.
- Masks are not required outdoors regardless of vaccination status.

Note: Local DOH rules allow a student or staff get a waiver from mask wearing only with a Dr. note and approval by the local Dept. of Health.

[Link to Region 7 Face Mask Waiver Request Form](#)

Tonasket Elementary School

Tonasket Middle School

Tonasket High School

Choice High School/Outreach School

Staff

- Masks are not required outdoors for staff or students.
- Masks are required of all school employees, volunteers, visitors, and students during school when students are present. (The experience for students is that all staff are masked inside the buildings.) This includes when students are in the building after hours for clubs, athletics, etc.
- Masks are not required for staff who are verified to be fully vaccinated when students are not present. (in your classroom or in an office).
- Face shields are allowed only if the staff member or student has Dept. of Health approval.
- Maintain physical distance of 3 feet or more between students in classroom settings to the degree possible and reasonable.
- Maintain physical distance of 6 feet or more between students while eating to the degree possible and reasonable.
- Staff Physical Distancing Requirements:
 - Maintain physical distancing of 6 feet between staff as much as possible.
 - Strictly maintain a 6 ft physical distancing if you are in close proximity inside for an extended period of time (more than 15 minutes).
- Maximize opportunities to increase physical space between students during all scheduled activities.

As recommended by DOH, all frequently touched surfaces will be cleaned and disinfected each night, and areas where a sick student has emitted (vomit, blood, feces, urine), will be cleaned immediately after the student is removed from the area.

All drivers and other school staff on the bus must wear appropriate face covering when not working alone. Students must wear a face mask before boarding the bus, while riding on the bus, and while departing the bus.

According to the OSPI Reopening Schools Planning Guide, the following principles for COVID prevention within school transportation are to be followed:

- Maximize outside air and keep windows open as much as possible.

Helpful Links

[K-12 COVID 19 DOH Requirements 2021-22 School Year - 10/4/2021](#)

[Washington State DOH COVID-19 Webpage](#)

[OSPI COVID-19 Guidance and Resources Webpage](#)

[L&I COVID-19 Resources Webpage](#)

[Handling Suspected Presumptive or Confirmed Cases - 8/12/20](#)

[Employer Health & Safety Requirements for School Scenarios - 10/30/20](#)

[CDC Cleaning and Disinfecting Guidelines - 4/19/21](#)

[L&I COVID Guidelines - 6/30/21](#)

[L&I Requirements and Guidance for Preventing COVID-19 - Updated 6/30/2021](#)

[Region 7 Positive Screening Protocol - 9/17/20](#)

[Washington State Dept. of Health COVID Information](#)

[Washington State COVID Information](#)

[Extra-Curricular Guidance - needs new link](#)

[OSPI COVID Information](#)

[DOH on Face Coverings Statewide - 6/29/21](#)

[Reykdal Letter on Masking - 7/29/21](#)

Helpful Links

[State Department of Health K-12 Reopening Decision Tree](#) (The Okanogan Dept. of Health reopening parameters are stricter than these guidelines)

[What to do if you have COVID-19 symptoms but have not been around anyone diagnosed with COVID-19](#)

[What to do if you were potentially exposed to someone with COVID-19](#)

[Washington's Safe Start reopening plan Updated 10.6.2020](#)

[WIAA Return to Play Guidelines Updated 10.6.2020](#)

[COVID OFFICE GUIDELINES](#)

[RETURN TO SCHOOL/CHILDCARE/WORK GUIDANCE FOLLOWING A POSITIVE SYMPTOM SCREEN FOR COVID-19 AND NO EXPOSURE](#)

[COVID-19 Safety Accident Prevention Plan English and Spanish 11-2020](#)

[Guidance on Quarantining after full classroom exposure to COVID-19](#)

[K-12 COVID-19 Requirements for Summer 2021 and the 2021-2022 School Year - May 13, 2021](#)

[*COVID-19 Vaccination Requirement for K-12 School Employees: Frequently Asked Questions*](#)

[Coronavirus \(COVID-19\) Employer Considerations for School Scenarios 8.5.2021](#)

[L&I - Which Mask for Which Task 8.23.2021](#)

[L&I Requirements and Guidance for Preventing COVID 19 8.23.2021](#)

[Supplemental Considerations to Mitigate COVID-19 Transmission in K-12 Schools](#)

Helpful Links

[7/28/21 Updated DOH K12 Guidance for K12 – for 2021/22 School Year](#)

[Governor Inslee’s COVID 19 Vaccination Requirement for K12 Employees: 8/20/2021](#)

[OSPI COVID-19 Resource Web Site Updated 9/3/2021](#)

[COVID-19 Vaccination Requirement for K–12 School Employees: Frequently Asked Questions](#)

[COVID-19 Contact Tracing Guide and FAQ for K-12 Schools](#) Updated 10/4/2021

[What to do if a Person is Symptomatic at School](#) (3 Pages) - Updated 10/4/2021

[K-12 COVID-19 Requirements for Summer 2021 and the 2021-2022 School Year](#) - Updated 10/4/2021

[K-12 COVID-19 Requirements for Summer 2021 and the 2021-2022 School Year](#) - Updated 10/27/2021

Updated 11.3.2021

- [K-12 Schools 2021-2022 Requirements](#)
- [K-12 Schools 2021-2022 Supplemental Considerations to Mitigate COVID-19 Transmission](#)
- [Symptom Decision Tree and Contact Tracing Checklist for K-12 Schools](#)
- [Contact Tracing Guide and FAQ for K-12 Schools](#)

Updates for January 7, 2022

[K-12 COVID-19 Requirements for Summer 2021 and the 2021-2022 School Year](#) - Updated January 7, 2022

[Supplemental Considerations to Mitigate COVID-19 Transmission in K-12 Schools](#) - Updated January 7, 2022

[Department of Health K–12 Schools Requirements Snapshot of High-level Changes](#) in the January 7, 2022 Update

Updates for January 24, 2022

[COVID-19 Contact Tracing Guide and FAQ for K-12 Schools \(wa.gov\)](#)- Updated January 24, 2022

[COVID-19 Symptom Decision Trees for Schools \(wa.gov\)](#) - Updated January 24, 2022